

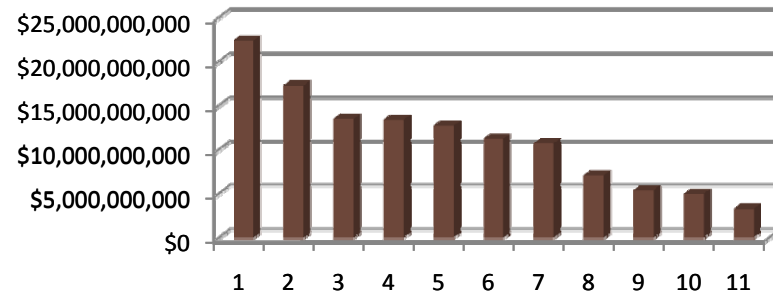
**Electric Utility Industry Sustainable Supply Chain Alliance
2010 Utility Environmental Performance Evaluation Benchmarking Report**

The following companies provided data for this study:

- | | |
|---------------------------------------|----------------------------------|
| Ameren Corporation | National Grid plc |
| American Electric Power Company, Inc. | Northeast Utilities |
| Arizona Public Service Company | Pacific Gas and Electric Company |
| Duke Energy Corporation | San Diego Gas & Electric |
| Entergy Corporation | Tennessee Valley Authority |
| Exelon Corporation | |

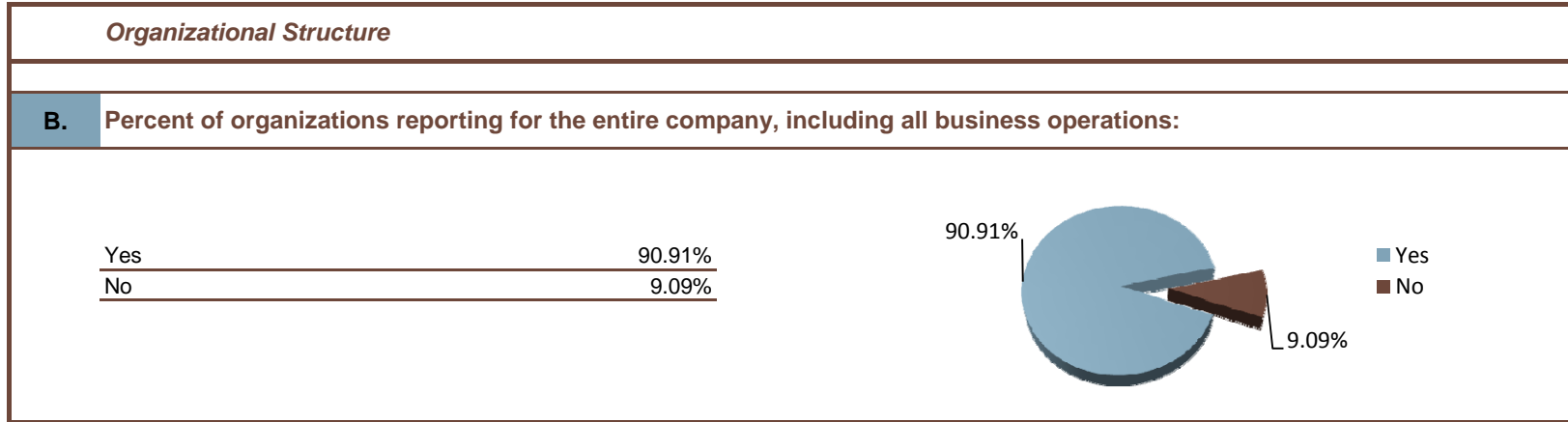
A. Sales (in dollars):

Average	\$11,105,220,909
Median	\$11,255,000,000



CAPS Research
Electric Utility Industry Sustainable Supply Chain Alliance
2010 Utility Environmental Performance Evaluation Benchmarking Report

Release Date: December 2, 2010



CAPS Research
Electric Utility Industry Sustainable Supply Chain Alliance
2010 Utility Environmental Performance Evaluation Benchmarking Report

Release Date: December 2, 2010

		Mean	Number of Responses
<i>Policy & Environmental Management</i>			
1	Percent of organizations that are required to adhere to an established policy on environmental management	90.91%	11
	If <u>Yes</u> : Percent of organizations that post this policy on a public website	80.00%	10
	If <u>No</u> : Percent of organizations that plan to establish a policy on environmental management within the next 12 months	0.00%	1
2	Percent of organizations that have an environmental management system (EMS) in place	72.73%	11
	If <u>Yes</u> : Percent ISO 14001 certified	37.50%	8
	If <u>Not Certified</u> : Percent ISO 14001 conformant	80.00%	5
3	Percent of organizations that report environmental performance results externally (e.g., website, publish a sustainability/environmental report, included in an annual report or other published document)	100.00%	11
	If <u>Yes</u> : Percent of organizations that post this policy on a public website	100.00%	11
4	Percent of organizations that measure their environmental compliance performance (e.g., Notices of Violation, Permit Non-compliances, Reportable Spills and Significant Monetary Fines/Penalties)	90.91%	11
	If <u>Yes</u> : Percent of organizations that report performance results to senior management and/or the Board of Directors	100.00%	10
	If <u>Yes</u> : Percent of organizations that publicly report their compliance performance results	90.00%	10
5	Percent of organizations that engage their suppliers on environmental performance standards (e.g., purchasing requirements, education and training, other)	81.82%	11

CAPS Research
Electric Utility Industry Sustainable Supply Chain Alliance
2010 Utility Environmental Performance Evaluation Benchmarking Report

Release Date: December 2, 2010

		Mean				Number of Responses
<i>Greenhouse Gas (GHG) Emissions</i>						
6	Percent of organizations that measure GHG emissions	100.00%				11
	If No : Percent of organizations that plan to measure GHG emissions within the next 12 months	n/a				0
	If Yes : Percent of organizations that are able to provide a breakdown of direct and indirect emissions as defined by the WRI/WBCSD GHG Protocol Scope 1, 2 and 3 emissions	72.73%				11
		Mean	Minimum	Maximum	Median	Number of Responses
<i>Of those organizations that are able to provide a breakdown of direct and indirect emissions as defined by the WRI/WBCSD GHG Protocol Scope 1, 2 and 3 emissions:</i>						
7	Percent change in GHG emissions inventory from current year to base year:					
	Direct emissions (Scope 1)	-22.64%	-56.02%	0.00%	-14.93%	7
	Indirect emissions (Scope 2)	-23.06%				4
	Other Indirect emissions (Scope 3)	i.d.				3
	Total emissions	-20.56%	-42.81%	0.00%	-18.38%	6
8	Percent of organization's total emissions that were directly attributed to the use of:					
	Electricity	18.99%	0.06%	100.00%	1.38%	6
	Non-transportation fuel	71.88%	1.21%	99.50%	88.00%	5
	Transportation fuel	0.43%	0.06%	1.00%	0.45%	6

CAPS Research
Electric Utility Industry Sustainable Supply Chain Alliance
2010 Utility Environmental Performance Evaluation Benchmarking Report

Release Date: December 2, 2010

		Mean	Number of Responses
	<i>Of those organizations that currently measure GHG emissions or plan to in the next 12 months:</i>		
9	Percent of organizations whose GHG inventory has been verified or audited by a third-party	45.45%	11
10	Percent of organizations that have established a voluntary commitment to reduce GHG emissions	81.82%	11
11	Percent of organizations that have a GHG emissions reduction program in place	90.91%	11
	If No : Percent of organizations that plan on creating a reduction program within the next 12 months	0.00%	1
12	Percent of organizations that regularly reported their GHG emissions performance to senior management and/or the Board of Directors	90.91%	11
13	Percent of organizations that publicly report GHG emissions	100.00%	11
	If Yes : Percent of organizations that post GHG emissions on a public website	100.00%	10
14	Percent of organizations for which new federal regulations mandating the reduction in GHG emissions would present a business risk or business opportunity:		
	Risk:		11
	Yes	72.73%	
	No	18.18%	
	Unknown	9.09%	
	Opportunity:		10
	Yes	70.00%	
	No	10.00%	
	Unknown	20.00%	

CAPS Research
 Electric Utility Industry Sustainable Supply Chain Alliance
 2010 Utility Environmental Performance Evaluation Benchmarking Report

Release Date: December 2, 2010

	Mean	Number of Responses
15	Percent of organizations that reported reducing GHG emissions by adopting the following measures:	11
	Energy efficiency improvements	100.00%
	Process modifications	81.82%
	Purchase of offsets	63.64%
	Sequestration	63.64%
	Use of alternative transportation fuels	100.00%
	Use of electric vehicles	72.73%
	Use of renewable energy	90.91%
<i>Air Emissions</i>		
16	Percent of organizations that are required to report emissions under Toxic Release Inventory (TRI) reporting requirements	10
	If <u>Yes</u> : Percent of organizations that have a plan in place to reduce TRI emissions	9
<i>Energy Consumption</i>		
17	Percent of organizations that reported the following energy consumption information:	11
	Energy consumption is measured and trended	81.82%
	A voluntary program to improve energy efficiency is in place	90.91%
	An energy efficiency goal has been established	72.73%
	Renewable energy is utilized as part of meeting energy needs	90.91%
	Progress towards energy efficiency is publicly communicated	72.73%
	Performed energy audit(s)	72.73%

CAPS Research
Electric Utility Industry Sustainable Supply Chain Alliance
2010 Utility Environmental Performance Evaluation Benchmarking Report

Release Date: December 2, 2010

		Mean				Number of Responses
18	Percent of organizations that can determine their organization's direct annual energy consumption	81.82%				11
19	Percent of organizations that can determine the total annual energy consumption supplied from renewable resources for the most recently completed fiscal year (e.g., solar, wind)	72.73%				11
	If Yes : Percent of total annual energy consumption supplied from renewable resources	5.97%	0.01%	14.00%	5.15%	8
<i>Water Use</i>						
20	Percent of organizations that reported the following water use information:					11
	Water use is measured and trended	90.91%				
	A voluntary program to improve water use efficiency is in place	45.45%				
	A water use efficiency goal has been established	36.36%				
	Water use is reported to senior management and/or the Board of Directors	54.55%				
	Progress towards water use efficiency is publicly communicated	54.55%				
	Performed water use audit(s)	63.64%				
21	Percent of organizations that can determine the total annual water use that was recycled or reused:					
	Recycled	10.00%				10
	Percent of annual water use that was recycled	i.d.				1
	Reused	9.09%				11
	Percent of annual water use that was reused	i.d.				1

CAPS Research
Electric Utility Industry Sustainable Supply Chain Alliance
2010 Utility Environmental Performance Evaluation Benchmarking Report

Release Date: December 2, 2010

	Mean	Number of Responses
<i>Waste and Materials Management</i>		
22	Percent of organizations that reported the following non-hazardous waste information:	11
	Non-hazardous waste generation is measured and trended	72.73%
	Voluntary commitments to reduce non-hazardous waste generation are in place	72.73%
	Progress towards reducing non-hazardous waste generation is publicly communicated	81.82%
	Recycling and/or reuse of non-hazardous waste is utilized as part of meeting waste goals	63.64%
	Recycling and/or reuse of non-hazardous waste is measured and trended	90.91%
23	Percent of organizations that can determine the total amount of non-hazardous waste stream that is recycled or reused:	11
	If Yes : Percent of non-hazardous industrial waste stream that was recycled or reused	40.78%
24	Percent of organizations that generate hazardous waste (e.g., universal waste, listed and non-listed hazardous waste)	11
25	Percent of organizations that reported the following hazardous waste (e.g., universal waste, listed and non-listed hazardous waste) information:	
	Universal Waste:	11
	Hazardous waste generation is measured and trended	90.91%
	Voluntary commitments to reduce hazardous waste generation are in place	54.55%
	Progress towards reducing hazardous waste generation is publicly communicated	54.55%
	Recycling and/or reuse of hazardous waste is utilized as part of meeting waste goals	63.64%
	Recycling and/or reuse of hazardous waste is measured and trended	63.64%
	Other Hazardous Waste:	11
	Hazardous waste generation is measured and trended	90.91%
	Voluntary commitments to reduce hazardous waste generation are in place	36.36%
	Progress towards reducing hazardous waste generation is publicly communicated	45.45%
	Recycling and/or reuse of hazardous waste is utilized as part of meeting waste goals	45.45%
	Recycling and/or reuse of hazardous waste is measured and trended	54.55%

CAPS Research
Electric Utility Industry Sustainable Supply Chain Alliance
2010 Utility Environmental Performance Evaluation Benchmarking Report

Release Date: December 2, 2010

	Mean	Number of Responses
26	Percent of organizations that can determine the percent of the hazardous waste stream that is recycled or reused, in accordance with applicable regulations	
	18.18%	11
	If <u>Yes</u>: Percent of hazardous waste stream recycled or reused	
	i.d.	2
<i>Innovation</i>		
27	Percent of organizations that integrate the following into the design of their products, processes/logistics:	
	Life-cycle analysis	77.78%
	Product sustainability	80.00%
28	Percent of organizations that have an environmental education program for:	
	Employees	90.91%
	Suppliers	63.64%
29	Percent of organizations that reward the following groups for environmental innovation:	
	Employees	70.00%
	Customers	33.33%
	Suppliers	40.00%

CAPS Research
Electric Utility Industry Sustainable Supply Chain Alliance
2010 Utility Environmental Performance Evaluation Benchmarking Report

Release Date: December 2, 2010

	Mean	Number of Responses
30	Percent of organizations that are aware of and have implemented the following programs/products/best practices/designations or certifications to reduce the environmental impacts of products/services:	
	Percent of organizations that are <u>aware of</u>:	11
	Energy Star	100.00%
	FSC	63.64%
	LEED	100.00%
	RoHS	36.36%
	SFI	45.45%
	SmartWay	72.73%
	WasteWise	100.00%
	WEEE	36.36%
	Percent of organizations that have <u>implemented</u>:	11
	Energy Star	81.82%
	FSC	57.14%
	LEED	90.91%
	RoHS	0.00%
	SFI	20.00%
	SmartWay	37.50%
	WasteWise	45.45%
	WEEE	25.00%
	Other	36.36%
	List other: BOMA Earthwise; California Take It Back Partnership; Climate Leaders; E3; EPA Coal Combustion Products Partnership (C2P2) (2); EPA WasteWise Partnership; EPA WRAP Awards; EPEAT; Green Suppliers Network; The Climate Registry	

CAPS Research
Electric Utility Industry Sustainable Supply Chain Alliance
2010 Utility Environmental Performance Evaluation Benchmarking Report

Release Date: December 2, 2010

	Mean	Number of Responses
31	Percent of organizations that have not implemented the following programs/products/best practices/designations or certifications, but plan to do so within the next two years:	
	Energy Star	0.00%
	FSC	0.00%
	LEED	100.00%
	RoHS	0.00%
	SFI	20.00%
	SmartWay	33.33%
	WasteWise	80.00%
	WEEE	0.00%
32	Percent of organizations that have implemented policies to reduce the impacts of business travel by utilizing video conferencing and similar tools	72.73%
33	Percent of organizations that have implemented printing and copying practices such as two-sided copying, "think before you print" policies, and toner cartridge recycling	100.00%
34	Percent of organizations that offer ways in which employees can reduce the impacts of commuting such as vanpools, public transit incentives, telecommuting, etc.	100.00%
35	Percent of organizations that release Request for Procurement (RFP) documents electronically:	100.00%
	If Yes: Percent of organizations that reported their volume (%) of electronically released RFP documents is:	11
	1% - 25%	18.18%
	26% - 50%	18.18%
	51% - 75%	18.18%
	76% - 100%	45.45%
36	Percent of organizations that release Purchase Orders (POs) electronically:	100.00%
	If Yes: Percent of organizations that reported their volume (%) of electronically released Purchase Orders (POs) is:	11
	1% - 25%	18.18%
	26% - 50%	18.18%
	51% - 75%	27.27%
	76% - 100%	36.36%

CAPS Research
Electric Utility Industry Sustainable Supply Chain Alliance
2010 Utility Environmental Performance Evaluation Benchmarking Report

Release Date: December 2, 2010

	Mean	Number of Responses	
37	Percent of organizations that <u>accept</u> any supplier invoices electronically:	90.91%	11
	If <u>Yes</u>: Percent of organizations that reported their volume (%) of electronically accepted supplier invoices is:		10
	1% - 25%	30.00%	
	26% - 50%	20.00%	
	51% - 75%	20.00%	
	76% - 100%	30.00%	
38	Percent of organizations that issue payments to suppliers electronically:	100.00%	11
	If <u>Yes</u>: Percent of organizations that reported their volume (%) of electronically issued payments to suppliers is:		11
	1% - 25%	18.18%	
	26% - 50%	9.09%	
	51% - 75%	27.27%	
	76% - 100%	45.45%	
39	Percent of organizations that <u>consider</u> environmental criteria (beyond compliance) in their RFPs:	100.00%	11
	If <u>Yes</u>: Percent of organizations that reported their volume (%) of RFPs that consider environmental criteria (beyond compliance) is:		11
	1% - 25%	36.36%	
	26% - 50%	45.45%	
	51% - 75%	9.09%	
	76% - 100%	9.09%	
40	Percent of organizations that <u>incorporate</u> environmental metrics (beyond compliance) in their supplier performance management process:	36.36%	11
41	Percent of organizations that purchase green products and/or services:	100.00%	11
	If <u>Yes</u>: Percent of organizations in which spend for green products and/or services increased, decreased, or did not change during the last 12 months:		11
	Increased	90.91%	
	Decreased	0.00%	
	Did Not Change	9.09%	

CAPS Research
Electric Utility Industry Sustainable Supply Chain Alliance
2010 Utility Environmental Performance Evaluation Benchmarking Report

Release Date: December 2, 2010

	Mean	Number of Responses	
42	Percent of organizations that sponsor suppliers for third-party reviews (e.g., Green Suppliers Network):	45.45%	11
	If <u>Yes</u>: Top three third-party reviews:		
	1. Green Suppliers Network (5)		
	2. CHWMEG (waste disposal vendors); E3		
	3. Byproduct Synergy Reviews		
43	Percent of organizations that are currently Green Suppliers Network (GSN) champions:	36.36%	11
	If <u>Yes</u>:		4
	Average number of suppliers (through August 2010) organizations have sponsored for the GSN:	7.50	
	Average number of suppliers organizations anticipate sponsoring through August 2011:	9.25	
	If <u>No</u>: Percent of organizations that plan on becoming Green Supplier Network Champions in 2011	0.00%	3

i.d. indicates insufficient data

n/a indicates not applicable